

1.5.11 Dimensions of the MG rail

1.5.11.1 Dimensions MGN_R

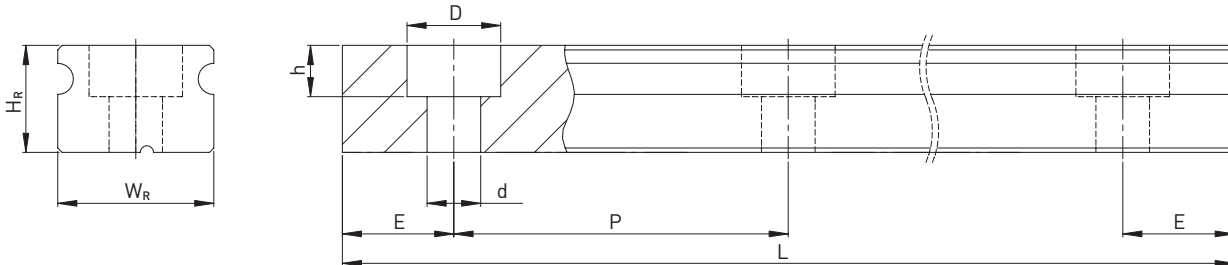


Table 1.68 Dimensions of the rail MGN_R

Series Size	Screws for rail [mm]	Dimensions of the rail [mm]						Max. length [mm]	Max. length $E_1 = E_2$	$E_{1/2}$ min [mm]	$E_{1/2}$ max [mm]	Mass [kg/m]
		W_R	H_R	D	h	d	P					
MGNR07R	M2 × 6	7	4,8	4,2	2,3	2,4	15,0	600	585	5	10	0,22
MGNR09R	M3 × 8	9	6,5	6,0	3,5	3,5	20,0	1200	1180	5	15	0,38
MGNR12R	M3 × 8	12	8,0	6,0	4,5	3,5	25,0	2000	1975	5	20	0,65
MGNR15R	M3 × 10	15	10,0	6,0	4,5	3,5	40,0	2000	1960	6	34	1,06

1.5.11.2 Dimensions MGW_R

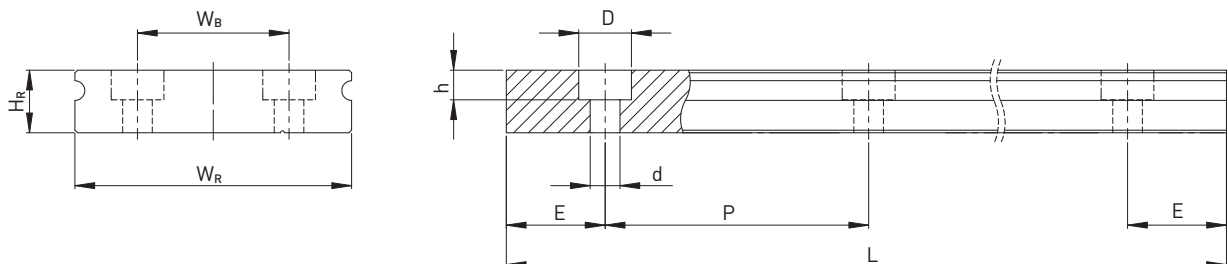


Table 1.69 Dimensions of the rail MGW_R

Series Size	Screws for rail [mm]	Dimensions of the rail [mm]							Max. length [mm]	Max. length $E_1 = E_2$ [mm]	$E_{1/2}$ min [mm]	$E_{1/2}$ max [mm]	Mass [kg/m]
		W_R	H_R	W_B	D	h	d	P					
MGWR07R	M3 × 6	14	5,2	—	6,0	3,2	3,5	30	600	570	6	24	0,51
MGWR09R	M3 × 8	18	7,0	—	6,0	4,5	3,5	30	1200	1170	6	24	0,91
MGWR12R	M4 × 8	24	8,5	—	8,0	4,5	4,5	40	2000	1960	8	32	1,49
MGWR15R	M4 × 10	42	9,5	23	8,0	4,5	4,5	40	2000	1960	8	32	2,86

Note:

1. The tolerance for E is +0,5 to -1,0 mm for standard, for joint connections 0 to -0.3 mm
2. If no information is provided on the $E_{1/2}$ dimensions, the maximum number of fixing holes is determined taking into account $E_{1/2}$ min