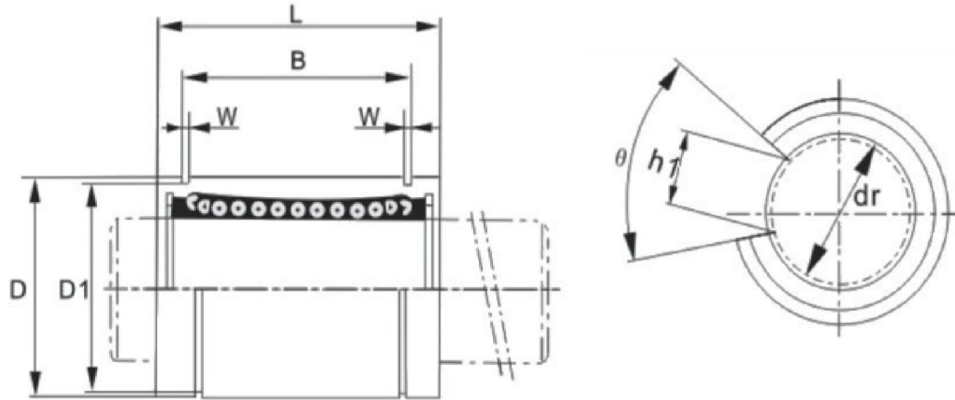
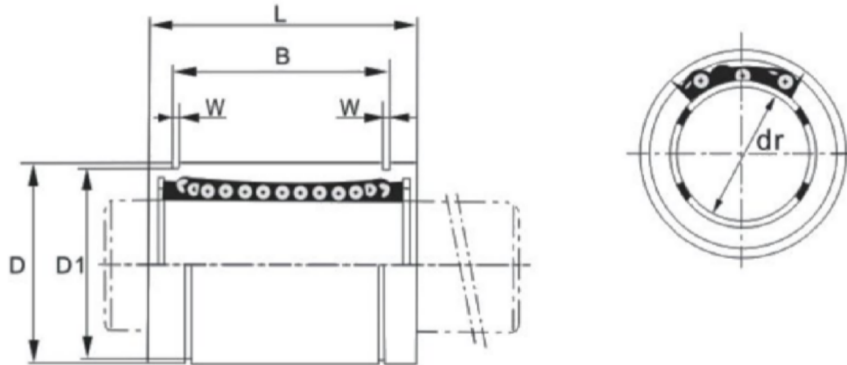


Linear Bearing KB_OP



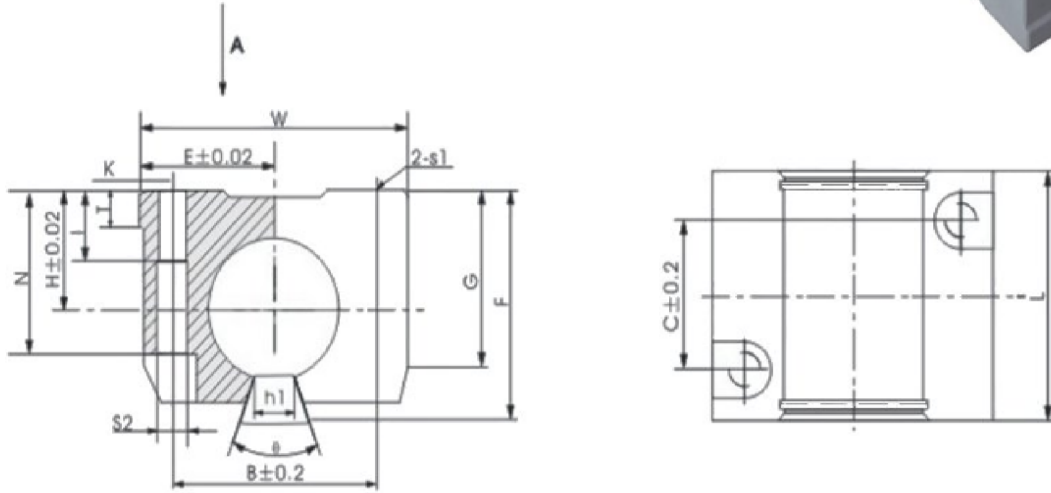
MODEL	NUMBER OF BALL ROWS	MAIN DIMENSIONS											ECCENTRICITY [MAX.]	BASIC LOAD RATING		WEIGHT [g]	
		INSCRIBED CIRCLE DIAMETER		OUTER DIAMETER		LENGTH		OUTER LOCKING GROOVE			W	h1		Φ	DYNAMIC C[kgf]		STATIC Co[kgf]
		dr	TOLERANCE	D	TOLERANCE	L	TOLERANCE	B	TOLERANCE	D1							
KB100P	3	10	+0.008 0	19	0 -0.009	29	0 -0.2	22	0 -0.2	18	1.3	6.8	80°	0.012	38	47	22.5
KB120P	3	12	+0.008 0	22	0 -0.009	32	0 -0.2	22.9	0 -0.2	21	1.3	7.5	78°	0.012	52	79	35
KB160P	4	16	+0.009 -0.001	26	0 -0.009	36	0 -0.2	24.9	0 -0.2	24.9	1.3	10	78°	0.012	59	91	38
KB200P	4	20	+0.009 -0.001	32	0 -0.011	45	0 -0.2	31.5	0 -0.2	30.3	1.6	10	60°	0.015	88	140	72
KB250P	5	25	+0.011 -0.001	40	0 -0.011	58	0 -0.3	44.1	0 -0.3	37.5	1.85	12.5	60°	0.015	100	160	173
KB300P	5	30	+0.011 -0.001	47	0 -0.011	68	0 -0.3	52.1	0 -0.3	44.5	1.85	12.5	50°	0.015	160	280	267
KB400P	5	40	+0.013 -0.002	62	0 -0.013	80	0 -0.3	60.6	0 -0.3	59	2.15	16.8	50°	0.017	220	400	558
KB500P	5	50	+0.013 -0.002	75	0 -0.013	100	0 -0.3	77.6	0 -0.3	72	2.65	21	50°	0.017	390	810	990
KB600P	5	60	+0.013 -0.002	90	0 -0.015	125	0 -0.4	101.7	0 -0.4	86.5	3.15	27.2	54°	0.02	480	1020	1700

Linear Bearing KB_UU



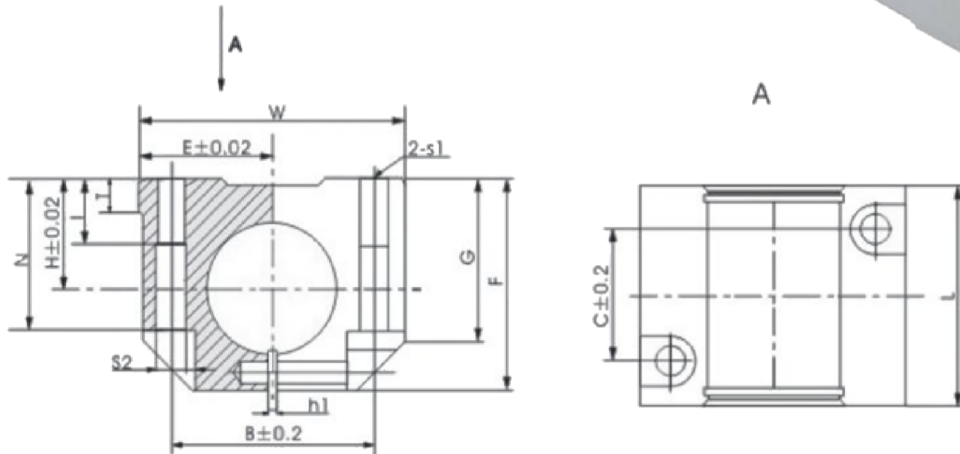
MODEL	NUMBER OF BALL ROWS	MAIN DIMENSIONS										ECCENTRICITY [MAX.]	BASIC LOAD RATING		WEIGHT [g]
		INSCRIBED CIRCLE DIAMETER		OUTER DIAMETER		LENGTH		OUTER LOCKING GROOVE			W		DYNAMIC C [kgf]	STATIC Co [kgf]	
		dr	TOLERANCE	D	TOLERANCE	L	TOLERANCE	B	TOLERANCE	D1					
KB3UU	3	10	+0.008 0	19	0 -0.009	29	0 -0.2					0.010	7	11	
KB4UU	3	12	+0.008 0	22	0 -0.009	32	0 -0.2					0.010	9	13	
KB5UU	4	16	+0.009 -0.001	26	0 -0.009	36	0 -0.2	14.5	0 -0.02	11.5	1.1	0.012	21	27	14
KB8UU	4	20	+0.009 -0.001	32	0 -0.011	45	0 -0.2	16.5	0 -0.02	15.2	1.1	0.012	27	41	20
KB10UU	5	25	+0.011 -0.001	40	0 -0.011	58	0 -0.3	22	0 -0.2	18	1.3	0.012	38	47	30
KB12UU	5	30	+0.011 -0.001	47	0 -0.011	68	0 -0.3	22	0 -0.2	21	1.3	0.011	52	79	40
KB16UU	5	40	+0.013 -0.002	62	0 -0.013	80	0 -0.3	24.9	0 -0.2	24.9	1.3	0.011	59	91	50
KB20UU	5	50	+0.013 -0.002	75	0 -0.013	100	0 -0.3	31.5	0 -0.2	30.3	1.6	0.015	88	140	90
KB25UU	5	60	+0.013 -0.002	90	0 -0.015	125	0 -0.4	44.1	0 -0.3	37.5	1.85	0.015	100	160	207
KB30UU	5	60	+0.013 -0.002	90	0 -0.015	125	0 -0.4	52.1	0 -0.3	44.5	1.85	0.015	160	280	320
KB40UU	5	60	+0.013 -0.002	90	0 -0.015	125	0 -0.4	60.6	0 -0.3	59	2.15	0.017	220	400	674
KB50UU	5	60	+0.013 -0.002	90	0 -0.015	125	0 -0.4	77.6	0 -0.3	72	2.65	0.017	390	810	1170
KB60UU	5	60	+0.013 -0.002	90	0 -0.015	125	0 -0.4	101.7	0 -0.4	86.5	3.15	0.02	480	1020	1950

Case Unit KBB_OP



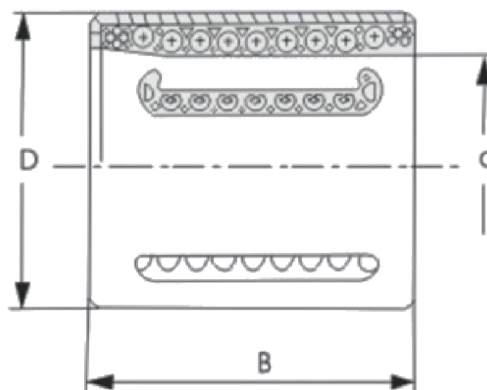
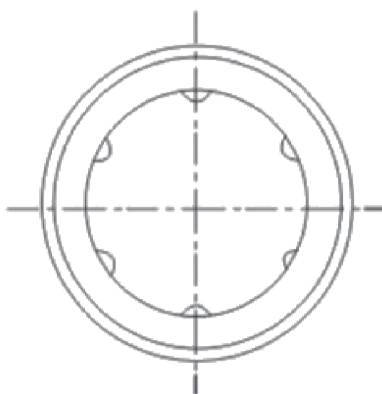
MODEL	SHAFT DIAMETER	MAIN DIMENSIONS											MOUNTING DIMENSIONS						WEIGHT [Kg]
		H	E	W	L	F	G	T	h1	N	ϕ	B	C	S1	S2	I	K		
KBB16OP	16	22	26.5	53	43	35	32	7	17.7	27	78°	40	26	M6	5.3	13	6.5	0.18	
KBB20OP	20	25	30	60	54	42	39	7.5	17.7	32	60°	45	32	M8	6.6	18	7.5	0.30	
KBB25OP	25	30	39	78	67	51	48	8.5	21.7	39	60°	60	40	M10	8.4	22	9	0.84	
KBB30OP	30	35	43.5	87	79	60	57	9.5	21.5	48	50°	68	45	M10	8.4	22	9.5	0.89	

Case Unit KBB_UU



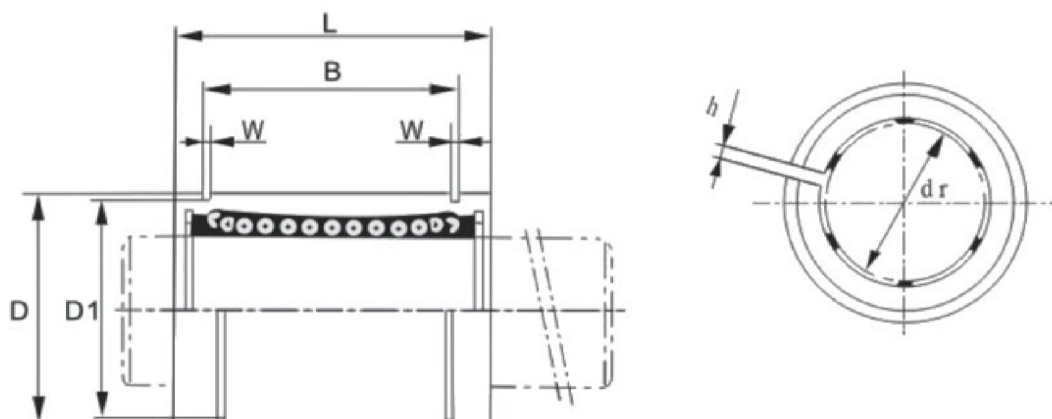
MODEL	SHAFT DIAMETER	MAIN DIMENSIONS									MOUNTING DIMENSIONS						WEIGHT [Kg]
		H	E	W	L	F	G	T	N	h1	B	C	S1	S2	I	K	
KBB16UU	16	22	26.5	53	43	42	32	7	30	1.5	40	26	M6	5.3	13	6.5	0.19
KBB20UU	20	25	30	60	54	50	39	7.5	34	2	45	32	M8	6.6	18	7.5	0.31
KBB25UU	25	30	39	78	67	60	48	8.5	40	2	60	40	M10	8.4	22	9	0.86
KBB30UU	30	35	43.5	87	79	70	57	9.5	48	2	68	45	M10	8.4	22	9.5	0.91

Linear Bearing KH_PP



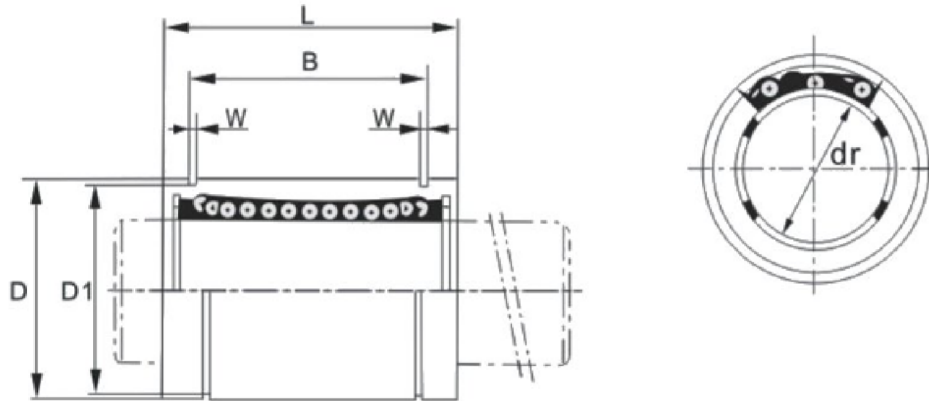
MODEL	NUMBER OF BALL ROWS	MAIN DIMENSIONS			BASIC LOAD RATING		WEIGHT [g]
		d	D	B	DYNAMIC C[kgf]	STATIC Co[kgf]	
KH0824PP	4	8	15	24	44	29	11.3
KH1026PP	4	10	17	26	51	38	14.4
KH1228PP	5	12	19	28	63	52	18.1
KH1428PP	5	14	21	28	63	52	20.6
KH1630PP	5	16	24	30	82	63	27.2
KH2030PP	6	20	28	30	97	81	32.7
KH2540PP	6	25	35	40	203	170	66
KH3050PP	7	30	40	50	286	276	95
KH4060PP	8	40	52	60	449	454	180
KH5070PP	9	50	62	70	561	643	250

Linear Bearing LM_AJUJ



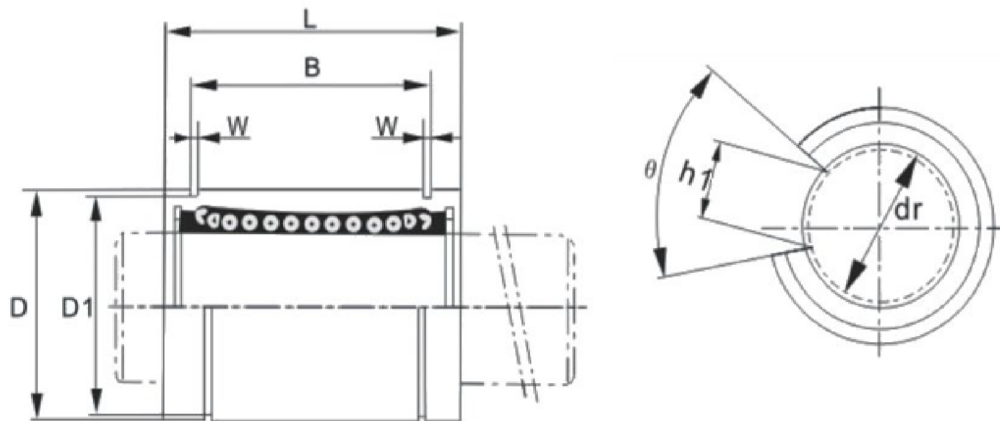
MODEL	NUMBER OF BALL ROWS	MAIN DIMENSIONS											ECCENTRICITY [MAX.]	BASIC LOAD RATING		WEIGHT [g]	
		INSCRIBED CIRCLE DIAMETER		OUTER DIAMETER		LENGTH		OUTER LOCKING GROOVE			W	h		Φ	DYNAMIC C[kgf]		STATIC Co[kgf]
		dr	TOLERANCE	D	TOLERANCE	L	TOLERANCE	B	TOLERANCE	D1							
LM6AJUU	4	6	0 -0.009	12	0 -0.011	19	0 -0.2	13.5	0 -0.2	11.5	1.1	1		0.012	21	27	6
LM8AJUU	4	8	0 -0.009	15	0 -0.011	24	0 -0.2	17.5	0 -0.2	14.3	1.1	1		0.012	27	41	14
LM10AJUU	4	10	0 -0.009	19	0 -0.013	29	0 -0.2	22	0 -0.2	18	1.3	1	80°	0.012	38	56	27
LM12AJUU	4	12	0 -0.009	21	0 -0.013	30	0 -0.2	23	0 -0.2	20	1.3	1.5	80°	0.012	42	61	31
LM13AJUU	4	13	0 -0.009	23	0 -0.013	32	0 -0.2	23	0 -0.2	22	1.3	1.5	80°	0.012	52	79	39
LM16AJUU	5	16	0 -0.009	28	0 -0.013	37	0 -0.2	26.5	0 -0.2	27	1.6	1.5	80°	0.012	79	120	73
LM20AJUU	5	20	0 -0.01	32	0 -0.016	42	0 -0.2	30.5	0 -0.2	30.5	1.6	1.5	60°	0.015	88	140	80
LM25AJUU	6	25	0 -0.01	40	0 -0.016	59	0 -0.3	41	0 -0.3	38	1.85	2	50°	0.015	100	160	205
LM30AJUU	6	30	0 -0.01	45	0 -0.016	64	0 -0.3	44.5	0 -0.3	43	1.85	2.5	50°	0.015	160	220	230
LM35AJUU	6	35	0 -0.012	52	0 -0.019	70	0 -0.3	49.5	0 -0.3	49	2.1	2.5	50°	0.02	170	320	366
LM40AJUU	6	40	0 -0.012	60	0 -0.019	80	0 -0.3	60.5	0 -0.3	57	2.1	3	50°	0.02	220	410	549
LM50AJUU	6	50	0 -0.012	80	0 -0.019	80	0 -0.3	74	0 -0.3	76.5	2.6	3	50°	0.02	390	810	1440
LM60AJUU	6	60	0 -0.015	90	0 -0.022	110	0 -0.3	85	0 -0.3	86.5	3.15	3	50°	0.025	480	1020	1700

Linear Bearing LM_AUU



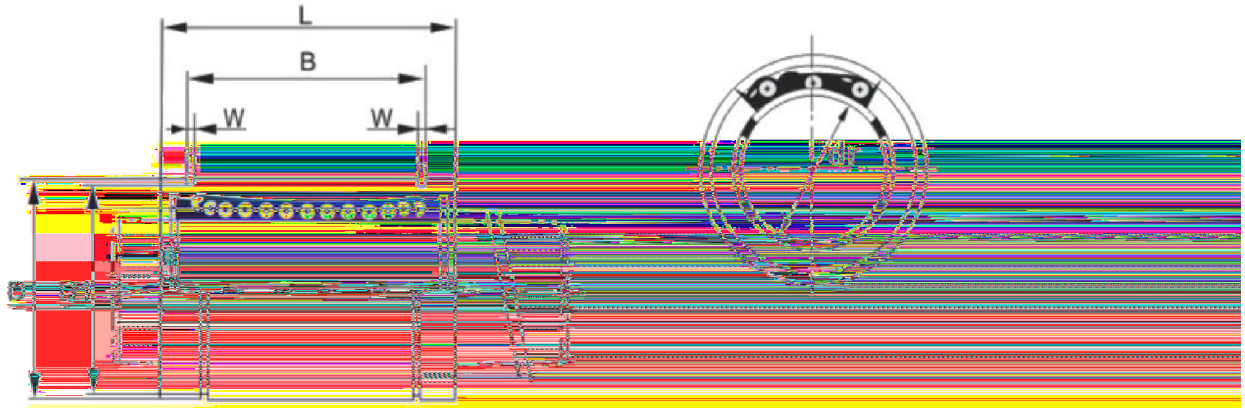
MODEL	NUMBER OF BALL ROWS	MAIN DIMENSIONS										ECCENTRICITY [MAX.]	BASIC LOAD RATING		WEIGHT [g]
		INSCRIBED CIRCLE DIAMETER		OUTER DIAMETER		LENGTH		OUTER LOCKING GROOVE			DYNAMIC C [kgf]		STATIC Co [kgf]		
		dr	TOLERANCE	D	TOLERANCE	L	TOLERANCE	B	TOLERANCE	D1				W	
LM3AUU	4	3	0 -0.008	7	0 -0.009	10	0 -0.12					0.008	7	11	
LM4AUU	4	4	0 -0.008	8	0 -0.009	12	0 -0.12					0.008	9	13	3
LM5AUU	4	5	0 -0.009	10	0 -0.009	15	0 -0.12	10.2	0 -0.2	9.6	1.1	0.008	17	21	4
LM6AUU	4	6	0 -0.009	12	0 -0.011	19	0 -0.2	11.5	0 -0.2	14.3	1.1	0.012	21	27	6
LM8AUU	4	8	0 -0.009	15	0 -0.011	24	0 -0.2	17.5	0 -0.2	14.3	1.1	0.012	27	41	14
LM10AUU	4	10	0 -0.009	19	0 -0.013	29	0 -0.2	22	0 -0.2	18	1.3	0.012	38	56	28
LM12AUU	4	12	0 -0.009	21	0 -0.013	30	0 -0.2	23	0 -0.2	20	1.3	0.012	42	61	32
LM13AUU	4	13	0 -0.009	23	0 -0.013	32	0 -0.2	23	0 -0.2	22	1.3	0.012	52	79	38
LM16AUU	5	16	0 -0.009	28	0 -0.013	37	0 -0.2	26.5	0 -0.2	27	1.6	0.012	79	120	74
LM20AUU	5	20	0 -0.01	32	0 -0.016	42	0 -0.2	30.5	0 -0.2	30.5	1.6	0.015	88	140	80
LM25AUU	6	25	0 -0.01	40	0 -0.016	59	0 -0.3	41	0 -0.3	38	1.85	0.015	100	160	206
LM30AUU	6	30	0 -0.01	45	0 -0.016	64	0 -0.3	44.5	0 -0.3	43	1.85	0.015	160	220	240
LM35AUU	6	35	0 -0.012	52	0 -0.019	70	0 -0.3	49.5	0 -0.3	49	2.1	0.02	170	320	370
LM40AUU	6	40	0 -0.012	60	0 -0.019	80	0 -0.3	60.5	0 -0.3	57	2.1	0.02	220	410	589
LM50AUU	6	50	0 -0.012	80	0 -0.019	100	0 -0.3	74	0 -0.3	76.5	3.15	0.02	390	810	1480
LM60AUU	6	60	0 -0.015	90	0 -0.022	110	0 -0.3	85	0 -0.3	86.5	3.15	0.025	480	1020	1750

Linear Bearing LM_OPUU



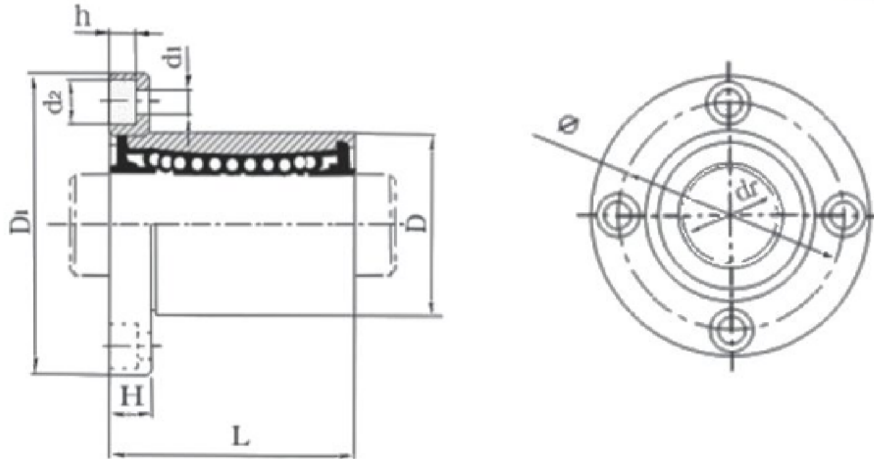
MODEL	NUMBER OF BALL ROWS	MAIN DIMENSIONS											ECCENTRICITY [MAX.]	BASIC LOAD RATING		WEIGHT [g]	
		INSCRIBED CIRCLE DIAMETER		OUTER DIAMETER		LENGTH		OUTER LOCKING GROOVE			W	h1		Φ	DYNAMIC C[kgf]		STATIC Co[kgf]
		dr	TOLERANCE	D	TOLERANCE	L	TOLERANCE	B	TOLERANCE	D1							
LM10OPUU	3	10	0 -0.009	19	0 -0.013	29	0 -0.2	22	0 -0.2	18	1.3	6.8	80°	0.012	38	56	
LM12OPUU	3	12	0 -0.009	21	0 -0.013	30	0 -0.2	23	0 -0.2	20	1.3	8	80°	0.012	42	61	24
LM13OPUU	3	13	0 -0.009	23	0 -0.013	32	0 -0.2	23	0 -0.2	22	1.3	9	80°	0.012	52	79	32
LM16OPUU	4	16	0 -0.009	28	0 -0.013	37	0 -0.2	26.5	0 -0.2	27	1.6	11	80°	0.012	79	120	58
LM20OPUU	4	20	0 -0.01	32	0 -0.016	42	0 -0.2	30.5	0 -0.2	30.5	1.6	11	60°	0.015	88	140	72
LM25OPUU	5	25	0 -0.01	40	0 -0.016	59	0 -0.3	41	0 -0.3	38	1.85	12	50°	0.015	100	160	177
LM30OPUU	5	30	0 -0.01	45	0 -0.016	64	0 -0.3	44.5	0 -0.3	43	1.85	15	50°	0.015	160	220	196
LM35OPUU	5	35	0 -0.012	52	0 -0.019	70	0 -0.3	49.5	0 -0.3	49	2.1	17	50°	0.02	170	320	320
LM40OPUU	5	40	0 -0.012	60	0 -0.019	80	0 -0.3	60.5	0 -0.3	57	2.1	20	50°	0.02	220	410	464
LM50OPUU	5	50	0 -0.012	80	0 -0.019	100	0 -0.3	74	0 -0.3	76.5	2.6	25	50°	0.02	390	810	1180
LM60OPUU	5	60	0 -0.015	90	0 -0.022	110	0 -0.3	85	0 -0.3	86.5	3.15	30	50°	0.025	480	1020	1700

Linear Bearing LM_UU



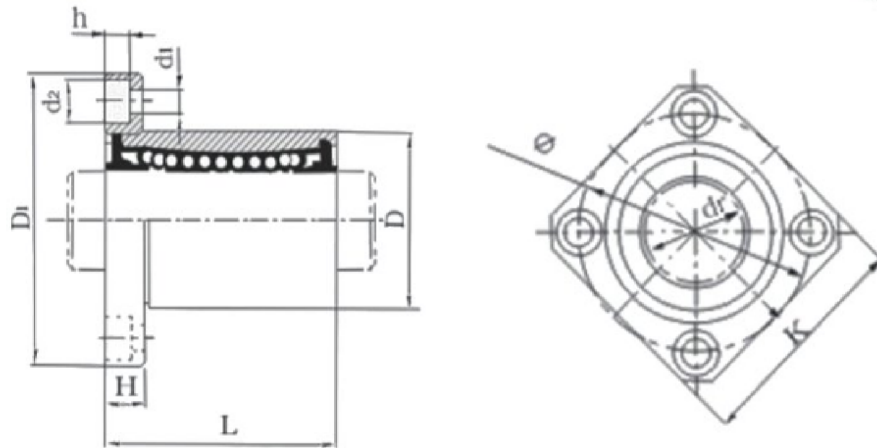
Type	Series	Bore diameter	MAIN DIMENSIONS						BASIC LOAD RATING					
			d	D	L	B	W	W ₁	C ₁₀	C ₀₁	C ₀₅	C ₀₂		
LM10UU	10	10	18	22	18	10	5	5	5	1.6	0.015	40	140	80
LM15UU	15	15	25	30	25	12	6	6	1.85	0.015	100	160	206	
LM20UU	20	20	30	36	30	14	7	7	1.85	0.015	160	220	240	
LM25UU	25	25	35	42	35	16	8	8	2.3	0.02	170	320	320	
LM30UU	30	30	40	48	40	18	9	9	2.8	0.02	220	410	500	
LM40UU	40	40	50	60	50	22	11	11	3.15	0.02	390	610	1480	
LM50UU	50	50	60	72	60	26	13	13	3.15	0.025	480	1020	1550	

Circular Flange Type LMF_UU



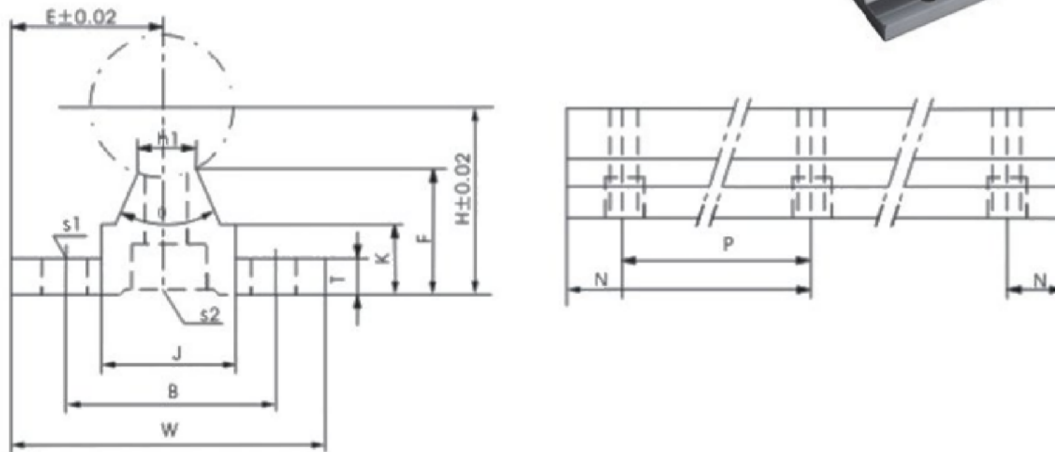
MODEL	NUMBER OF BALL ROWS	MAIN DIMENSIONS													SQUARENESS	ECCENTRICITY [MAX.]	BASIC LOAD RATING		WEIGHT [Kg]
		INSCRIBED CIRCLE DIAMETER		OUTER DIAMETER		LENGTH		FLANGE				HOLE FOR ATTACHMENT					DYNAMIC C[kgf]	STATIC Co[kgf]	
		d _r	TOLERANCE	D	TOLERANCE	L	TOLERANCE	D1	K	H	φ	d1	d2	h					
LMF6UU	4	6	0 -0.009	12	0 -0.011	19	0 -0.2	28	22	5	20	3.5	6	3.1	0.012	0.012	21	27	0.022
LMF8UU	4	8	0 -0.009	15	0 -0.011	24	0 -0.2	32	25	5	24	3.5	6	3.1	0.012	0.012	28	40	0.035
LMF10UU	4	10	0 -0.009	19	0 -0.013	29	0 -0.2	40	30	6	29	4.5	7.5	4.1	0.012	0.012	38	56	0.066
LMF12UU	4	12	0 -0.009	21	0 -0.013	30	0 -0.2	42	32	6	32	4.5	7.5	4.1	0.012	0.012	52	80	0.7
LMF13UU	4	13	0 -0.009	23	0 -0.013	32	0 -0.2	43	34	6	33	4.5	7.5	4.1	0.012	0.012	52	80	0.79
LMF16UU	5	16	0 -0.009	28	0 -0.013	37	0 -0.2	48	37	6	38	4.5	7.5	4.1	0.012	0.012	79	120	0.122
LMF20UU	5	20	0 -0.01	32	0 -0.016	42	0 -0.2	54	42	8	43	5.5	9	5.1	0.015	0.015	90	140	0.163
LMF25UU	6	25	0 -0.01	40	0 -0.016	59	0 -0.3	62	50	8	51	5.5	9	5.1	0.015	0.015	100	160	0.311
LMF30UU	6	30	0 -0.01	45	0 -0.016	64	0 -0.3	74	58	10	60	6.6	11	6.1	0.015	0.015	160	280	0.42
LMF35UU	6	35	0 -0.012	52	0 -0.019	70	0 -0.3	82	64	10	67	6.6	11	6.1	0.02	0.02	170	320	0.6
LMF40UU	6	40	0 -0.012	60	0 -0.019	80	0 -0.3	96	75	13	78	9	14	8.1	0.02	0.02	220	410	0.749
LMF50UU	6	50	0 -0.012	80	0 -0.019	100	0 -0.3	116	92	13	98	9	14	8.1	0.02	0.02	390	810	1.96
LMF60UU	6	60	0 -0.015	90	0 -0.022	110	0 -0.3	134	106	18	112	11	17.5	10.8	0.025	0.025	480	1020	2.7

Square Flange Type LMK_UU



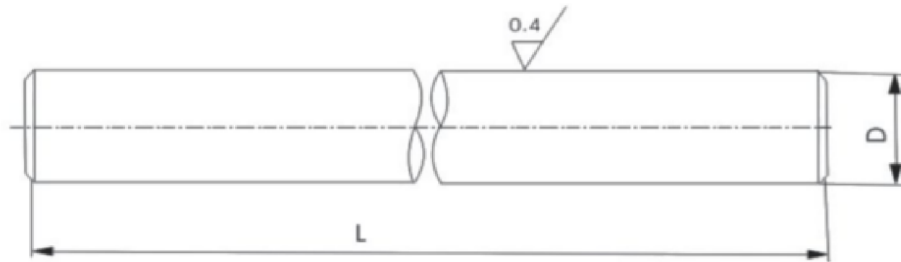
MODEL	NUMBER OF BALL ROWS	MAIN DIMENSIONS													SQUARENESS	ECCENTRICITY [MAX.]	BASIC LOAD RATING		WEIGHT [Kg]
		INSCRIBED CIRCLE DIAMETER		OUTER DIAMETER		LENGTH		FLANGE				HOLE FOR ATTACHMENT					DYNAMIC C[kgf]	STATIC Co[kgf]	
		d _r	TOLERANCE	D	TOLERANCE	L	TOLERANCE	D1	K	H	φ	d1	d2	h					
LMK6UU	4	6	0 -0.009	12	0 -0.011	19	0 -0.2	28	22	5	20	3.5	6	3.1	0.012	0.012	21	27	0.017
LMK8UU	4	8	0 -0.009	15	0 -0.011	24	0 -0.2	32	25	5	24	3.5	6	3.1	0.012	0.012	28	40	0.027
LMK10UU	4	10	0 -0.009	19	0 -0.013	29	0 -0.2	40	30	6	29	4.5	7.5	4.1	0.012	0.012	38	56	0.047
LMK12UU	4	12	0 -0.009	21	0 -0.013	30	0 -0.2	42	32	6	32	4.5	7.5	4.1	0.012	0.012	52	80	0.53
LMK13UU	4	13	0 -0.009	23	0 -0.013	32	0 -0.2	43	34	6	33	4.5	7.5	4.1	0.012	0.012	52	80	0.64
LMK16UU	5	16	0 -0.009	28	0 -0.013	37	0 -0.2	48	37	6	38	4.5	7.5	4.1	0.012	0.012	79	120	0.102
LMK20UU	5	20	0 -0.01	32	0 -0.016	42	0 -0.2	54	42	8	43	5.5	9	5.1	0.015	0.015	90	140	0.12
LMK25UU	6	25	0 -0.01	40	0 -0.016	59	0 -0.3	62	50	8	51	5.5	9	5.1	0.015	0.015	100	160	0.272
LMK30UU	6	30	0 -0.01	45	0 -0.016	64	0 -0.3	74	58	10	60	6.6	11	6.1	0.015	0.015	160	280	0.34
LMK35UU	6	35	0 -0.012	52	0 -0.019	70	0 -0.3	82	64	10	67	6.6	11	6.1	0.02	0.02	170	320	0.496
LMK40UU	6	40	0 -0.012	60	0 -0.019	80	0 -0.3	96	75	13	78	9	14	8.1	0.02	0.02	220	410	0.773
LMK50UU	6	50	0 -0.012	80	0 -0.019	100	0 -0.3	116	92	13	98	9	14	8.1	0.02	0.02	390	810	1.72
LMK60UU	6	60	0 -0.015	90	0 -0.022	110	0 -0.3	134	106	18	112	11	17.5	10.8	0.025	0.025	480	1020	2.25

Support Rail Unit SBR



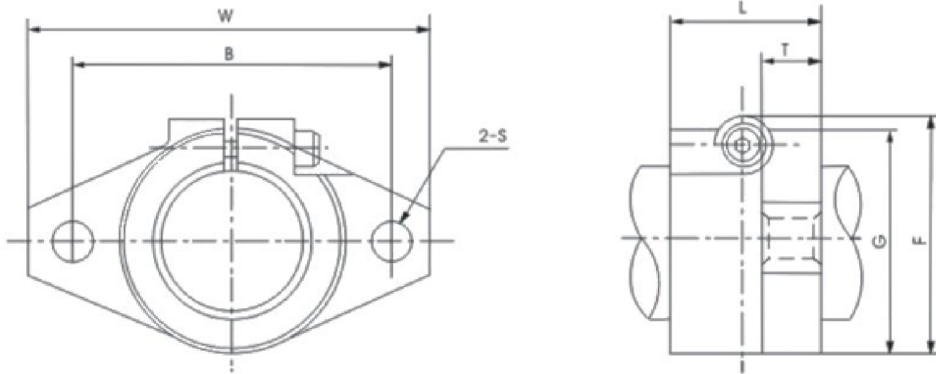
MODEL	SHAFT DIAMETER	MAIN DIMENSIONS									MOUNTING DIMENSIONS					WEIGHT [Kg]
		H	E	W	F	T	K	J	h1	ϕ	B	N	P	S1	S2	
SBR10	10	18	16	32	13.5	4	8.9	12.4	4.7	80°	22	50	100	4.5	M4	1.2
SBR12	12	2.046	17	34	15	4.5	9.8	15	6	80°	25	50	100	4.5	M4	1.8
SBR13	13	21	17	34	15	4.5	9.8	15	6	80°	25	50	100	4.5	M4	2.1
SBR16	16	25	20	40	17.8	5	11.7	18.5	8	80°	30	50	150	5.5	M5	2.4
SBR20	20	27	22.5	45	17.7	5	10	19	8	50°	30	50	150	5.5	M6	3.3
SBR25	25	33	27.5	55	21	6	12	21.5	8	50°	35	100	200	6.5	M6	5.31
SBR30	30	37	30	60	22.8	7	13	26.5	10.3	50°	40		200	6.5	M8	7.83
SBR35	35	43	32.5	65	26.5	8	15.5	28	13	50°	45		200	9	M8	9.88
SBR40	40	48	37.5	75	29.4	9	17	38	15.5	50°	55		300	9	M8	13.15
SBR50	50	62	47.5	95	38.8	11	21	45	20	50°	70		300	11	M10	20.4

Pipe Shaft SFC_g6



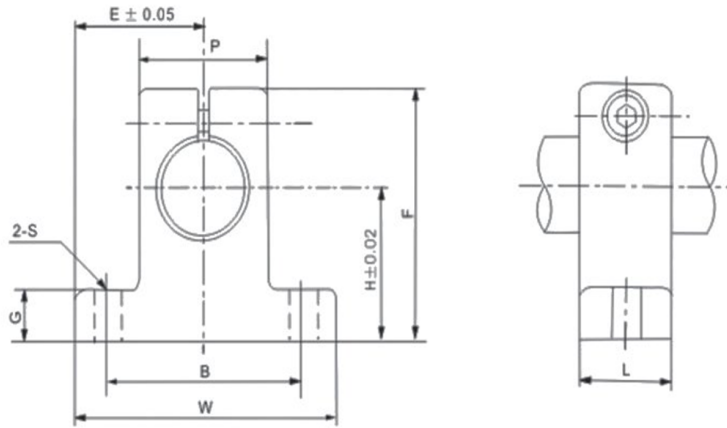
MODEL	INSCRIBED CIRCLE DIAMETER	DIMETER TOLERANCE		DEPTH OF EFFECTIVE HARDEN LAYER	WEIGHT
		g6	h6		
SFC6	6	-0.004 -0.012	0 -0.008	0.4~1	0.22
SFC8	8	-0.005 -0.014	0 -0.009	0.4~1	0.4
SFC10	10	-0.005 -0.014	0 -0.009	0.6~1.5	0.62
SFC12	12	-0.006 -0.017	0 -0.011	0.6~1.5	0.89
SFC13	13	-0.006 -0.017	0 -0.011	0.6~1.5	1.04
SFC16	16	-0.006 -0.017	0 -0.011	0.8~2	1.58
SFC20	20	-0.007 -0.02	0 -0.013	0.8~2	2.47
SFC25	25	-0.007 -0.02	0 -0.013	0.8~2	3.85
SFC30	30	-0.007 -0.02	0 -0.013	0.8~3	5.55
SFC35	35	-0.009 -0.025	0 -0.016	0.8~3	7.55
SFC40	40	-0.009 -0.025	0 -0.016	0.8~3	9.87
SFC50	50	-0.009 -0.025	0 -0.016	0.8~3	15.4

Shaft Support SHF



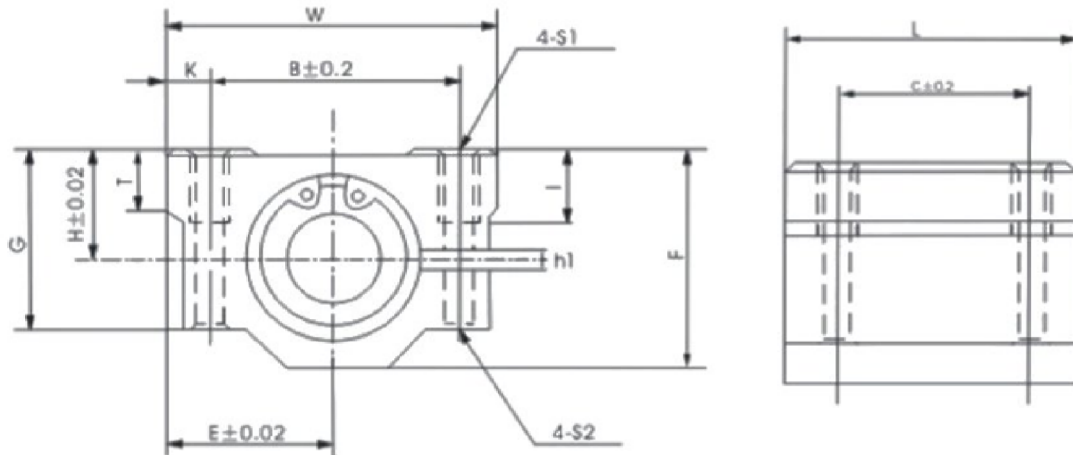
MODEL	SHAFT DIAMETER	MAIN DIMENSIONS							DESIGNATION OF CLAMPING BOLT	DESIGNATION OF MOUNTING BOLT	WEIGHT [Kg]
		W	L	T	F	G	B	S			
SHF3	3	43	10	5	24	20	32	5.5	M4	M5	0.013
SHF4	4	43	10	5	24	20	32	5.5	M4	M5	0.013
SHF5	5	43	10	5	24	20	32	5.5	M4	M5	0.013
SHF6	6	43	10	5	24	20	32	5.5	M4	M5	0.013
SHF8	8	43	10	5	24	20	32	5.5	M4	M5	0.013
SHF10	10	43	10	5	24	20	32	5.5	M4	M5	0.013
SHF12	12	47	13	7	28	25	36	5.5	M4	M5	0.02
SHF13	13	47	13	7	28	25	36	5.5	M4	M5	0.02
SHF16	16	50	16	8	31	28	40	5.5	M4	M5	0.027
SHF20	20	60	20	8	37	34	48	7	M5	M6	0.04
SHF25	25	70	25	10	42	40	56	7	M5	M6	0.06
SHF30	30	80	30	12	50	46	64	9	M6	M8	0.011
SHF35	35	92	35	14	58	50	72	12	M8	M10	0.380
SHF40	40	102	40	16	67	56	80	12	M10	M10	0.510
SHF50	50	122	50	19	83	70	96	14	M12	M12	0.89

Shaft Support SK



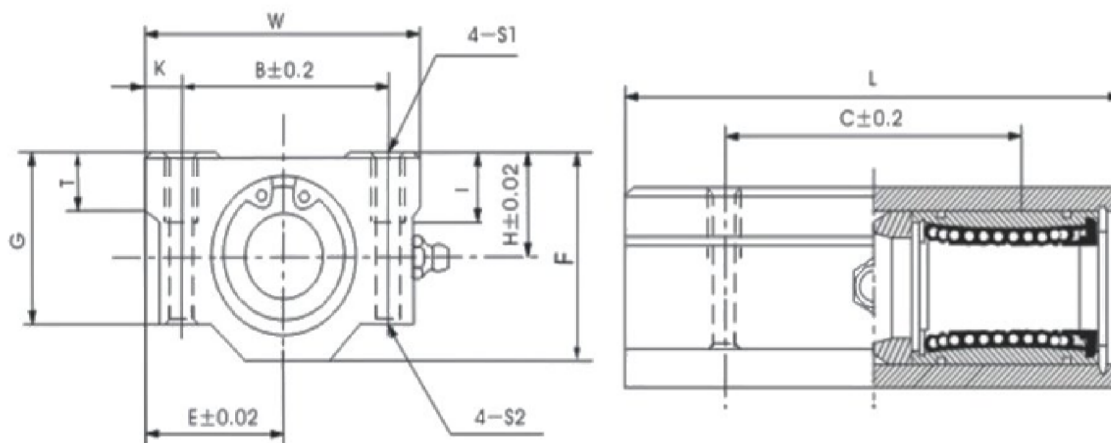
MODEL	SHAFT DIAMETER	MAIN DIMENSIONS									DESIGNATION OF CLAMPING BOLT	DESIGNATION OF MOUNTING BOLT	WEIGHT [Kg]
		H	E	W	L	F	G	P	B	S			
SK3	3	20	21	42	14	32.8	6	18	32	5.5	M4	M5	0.024
SK4	4	20	21	42	14	32.8	6	18	32	5.5	M4	M5	0.024
SK5	5	20	21	42	14	32.8	6	18	32	5.5	M4	M5	0.024
SK6	6	20	21	42	14	32.8	6	18	32	5.5	M4	M5	0.024
SK8	8	20	21	42	14	32.8	6	18	32	5.5	M4	M5	0.024
SK10	10	20	21	42	14	32.8	6	18	32	5.5	M4	M5	0.024
SK12	12	23	21	42	14	37.5	6	20	32	5.5	M4	M5	0.03
SK13	13	23	21	42	14	37.5	6	20	32	5.5	M4	M5	0.03
SK16	16	27	24	48	16	44	8	25	38	5.5	M4	M5	0.04
SK20	20	31	30	60	20	51	10	30	45	6.5	M5	M6	0.07
SK25	25	35	35	70	24	60	12	38	56	6.6	M6	M6	0.13
SK30	30	42	42	84	28	70	12	44	64	9	M6	M8	0.18
SK35	35	50	49	98	32	82	15	50	74	11	M8	M10	0.27
SK40	40	60	57	114	36	96	15	60	90	11	M8	M10	0.42
SK50	50	70	63	126	40	120	18	74	100	14	M12	M12	0.75

Case Unit SMA_AJUJ



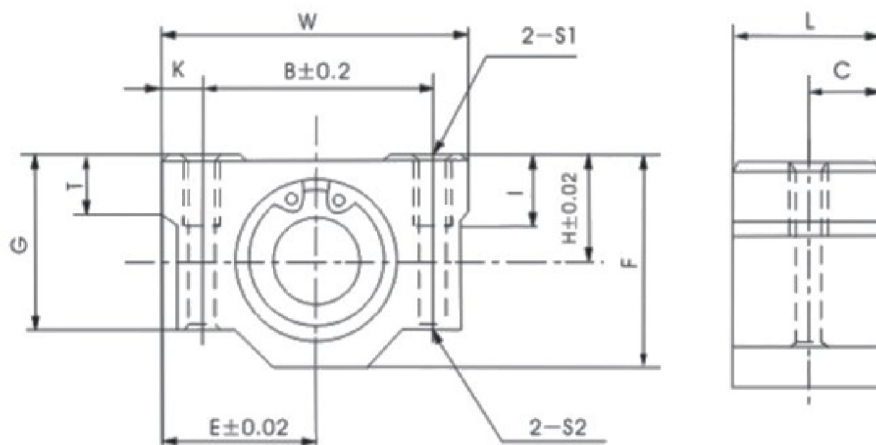
MODEL	SHAFT DIAMETER	MAIN DIMENSIONS							MOUNTING DIMENSIONS						WEIGHT [Kg]
		H	E	W	L	F	G	T	B	C	K	S1	S2	I	
SMA8AJUU	8	11	17	34	30	22	18	6	24	18	5	M4	3.4	8	0.052
SMA10AJUU	10	13	20	40	35	26	21	8	28	21	6	M5	4.3	12	0.092
SMA12AJUU	12	15	21	42	36	28	24	8	30.5	26	5.75	M5	4.3	12	0.102
SMA13AJUU	13	15	22	44	39	30	24.5	8	33	26	5.5	M5	4.3	12	0.12
SMA16AJUU	16	19	25	50	44	38.5	32.5	9	36	34	7	M5	4.3	12	0.2
SMA20AJUU	20	21	27	54	50	41	35	11	40	40	7	M6	5.2	12	0.255
SMA25AJUU	25	26	38	76	67	51.5	42	12	54	50	11	M8	7	18	0.6
SMA30AJUU	30	30	39	78	72	59.5	49	15	58	58	10	M8	7	18	0.735
SMA35AJUU	35	34	45	90	80	68	54	18	70	60	10	M8	7	18	1.1
SMA40AJUU	40	40	51	102	90	78	62	20	80	60	11	M10	8.7	25	1.59
SMA50AJUU	50	52	61	122	110	102	80	25	100	80	11	M10	8.7	25	3.34
SMA60AJUU	60	58	66	132	122	114	94	30	108	90	12	M12	10.7	25	4.72

Case Unit SMA_LUU



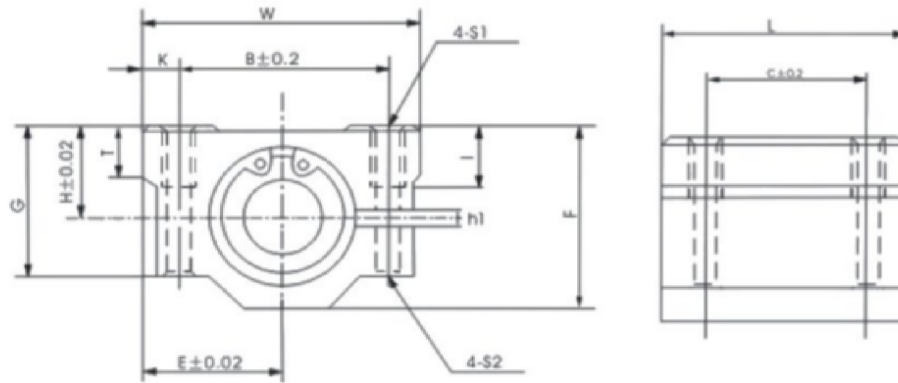
MODEL	SHAFT DIAMETER	MAIN DIMENSIONS							MOUNTING DIMENSIONS					WEIGHT [Kg]	
		H	E	W	L	F	G	T	B	C	K	S1	S2		I
SMA8LUU	8	11	17	34	58	22	18	6	24	42	5	M4	3.4	8	0.1
SMA10LUU	10	13	20	40	68	26	21	8	28	46	6	M5	4.3	12	0.18
SMA12LUU	12	15	21	42	70	28	24	8	30.5	50	5.75	M5	4.3	12	0.2
SMA13LUU	13	15	22	44	75	30	24.5	8	33	50	5.5	M5	4.3	12	0.23
SMA16LUU	16	19	25	50	85	38.5	32.5	9	36	60	7	M5	4.3	12	0.39
SMA20LUU	20	21	27	54	96	41	35	11	40	70	7	M6	5.2	12	0.49
SMA25LUU	25	26	38	76	130	51.5	42	12	54	100	11	M8	7	18	1.165
SMA30LUU	30	30	39	78	140	59.5	49	15	58	110	10	M8	7	18	1.43
SMA35LUU	35	34	45	90	155	68	54	18	70	120	10	M8	7	18	2.13
SMA40LUU	40	40	51	102	175	78	62	20	80	140	11	M10	8.7	25	3.09
SMA50LUU	50	52	61	122	215	102	80	25	100	160	11	M10	8.7	25	6.53

Case Unit SMA_SUU



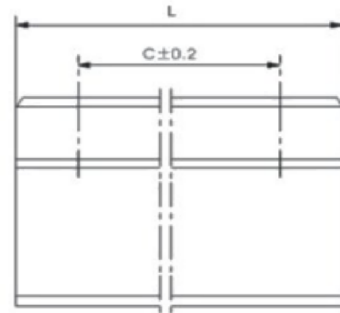
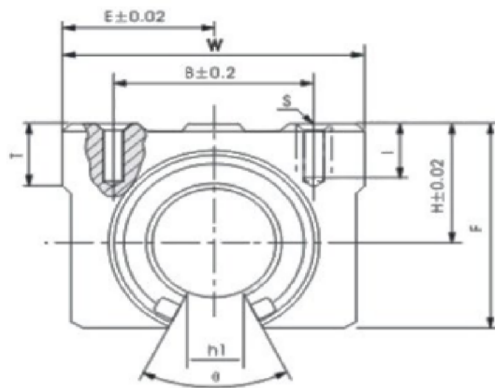
MODEL	SHAFT DIAMETER	MAIN DIMENSIONS							MOUNTING DIMENSIONS					WEIGHT [Kg]	
		H	E	W	L	F	G	T	B	C	K	S1	S2		I
SMA8SUU	8	11	17	34	15.5	22	18	6	24	7.75	5	M4	3.4	8	0.027
SMA10SUU	10	13	20	40	20	26	21	8	28	10	6	M5	4.3	12	0.053
SMA12SUU	12	15	21	42	21	28	24	8	30.5	10.5	5.75	M5	4.3	12	0.06
SMA13SUU	13	15	22	44	20.6	30	24.5	8	33	10.3	5.5	M5	4.3	12	0.064
SMA16SUU	16	19	25	50	24.1	38.5	32.5	9	36	12.05	7	M5	4.3	12	0.11
SMA20SUU	20	21	27	54	28.1	41	35	11	40	14.05	7	M6	5.2	12	0.144
SMA25SUU	25	26	38	76	38	51.5	42	12	54	19	11	M8	7	18	0.34
SMA30SUU	30	30	39	78	41.5	59.5	49	15	58	20.75	10	M8	7	18	0.424
SMA35SUU	35	34	45	90	45.5	68	54	18	70	22.75	10	M8	7	18	0.626
SMA40SUU	40	40	51	102	56.5	78	62	20	80	28.25	11	M10	8.7	25	1
SMA50SUU	50	52	61	122	69	102	80	25	100	34.5	11	M10	8.7	25	2.1

Case Unit SMA_UU



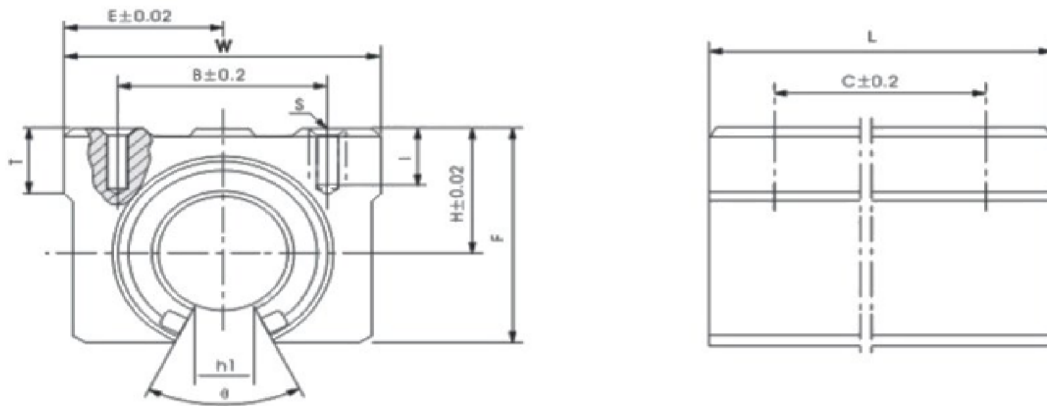
MODEL	SHAFT DIAMETER	MAIN DIMENSIONS							MOUNTING DIMENSIONS					WEIGHT [Kg]	
		H	E	W	L	F	G	T	B	C	K	S1	S2		I
SMA8UU	8	11	17	34	30	22	18	6	24	18	5	M4	3.4	8	0.052
SMA10UU	10	13	20	40	35	26	21	8	28	21	6	M5	4.3	12	0.092
SMA12UU	12	15	21	42	36	28	24	8	30.5	26	5.75	M5	4.3	12	0.102
SMA13UU	13	15	22	44	39	30	24.5	8	33	26	5.5	M5	4.3	12	0.12
SMA16UU	16	19	25	50	44	38.5	32.5	9	36	34	7	M5	4.3	12	0.2
SMA20UU	20	21	27	54	50	41	35	11	40	40	7	M6	5.2	12	0.255
SMA25UU	25	26	38	76	67	51.5	42	12	54	50	11	M8	7	18	0.6
SMA30UU	30	30	39	78	72	59.5	49	15	58	58	10	M8	7	18	0.735
SMA35UU	35	34	45	90	80	68	54	18	70	60	10	M8	7	18	1.1
SMA40UU	40	40	51	102	90	78	62	20	80	60	11	M10	8.7	25	1.59
SMA50UU	50	52	61	122	110	102	80	25	100	80	11	M10	8.7	25	3.34
SMA60UU	60	58	66	132	122	114	94	30	108	90	12	M12	10.7	25	4.72

Case Unit SME_LUU



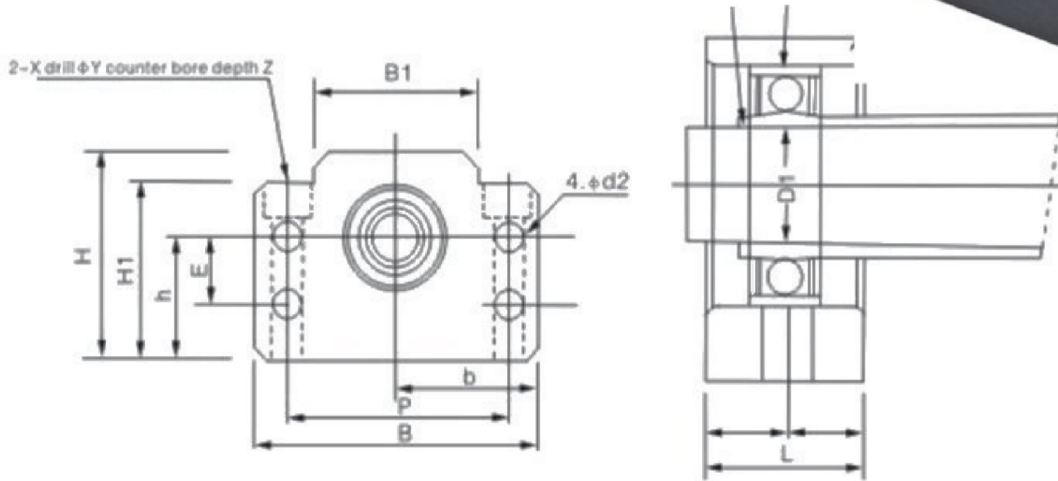
MODEL	SHAFT DIAMETER	MAIN DIMENSIONS								MOUNTING DIMENSIONS				WEIGHT [Kg]
		H	E	W	L	F	T	h1	φ	B	C	S	I	
SME16LUU	16	20	22.5	45	85	33	9	10	80°	32	60	M5	12	0.29
SME20LUU	20	23	24	48	96	39	11	10	60°	35	70	M6	12	0.51
SME25LUU	25	27	30	60	130	47	14	11.5	50°	40	100	M6	12	0.98
SME30LUU	30	33	35	70	140	56	15	14	50°	50	110	M8	18	1.45
SME35LUU	35	37	40	80	155	63	18	16	50°	55	120	M8	18	1.8
SME40LUU	40	42	45	90	175	72	20	19	50°	65	140	M10	20	2.48

Case Unit SME_UU

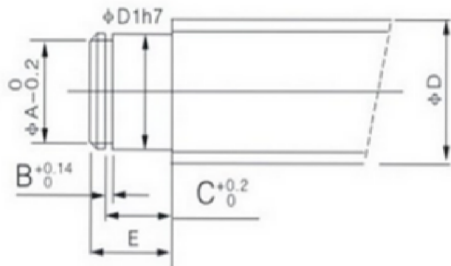


MODEL	SHAFT DIAMETER	MAIN DIMENSIONS							MOUNTING DIMENSIONS				BASIC LOAD RATING		WEIGHT [Kg]	
		H	E	W	L	F	T	h1	φ	B	C	S	I	DYNAMIC C[kgf]		STATIC Co[kgf]
SME10UU	10	15	18	36	32	24	7	6	80°	25	20	M5	10	38	56	0.065
SME12UU	12	17	20	40	39	27.6	8	8.5	80°	28	26	M5	10	42	61	0.1
SME13UU	13	17	20	40	39	27.6	8	8.5	80°	28	26	M5	10	52	80	0.1
SME16UU	16	20	22.5	45	45	33	9	10	80°	32	30	M5	12	59	91	0.15
SME20UU	20	23	24	48	50	39	11	10	60°	35	35	M6	12	88	140	0.2
SME25UU	25	27	30	60	65	47	14	11.5	50°	40	40	M6	12	100	160	0.45
SME30UU	30	33	35	70	70	56	15	14	50°	50	50	M8	18	160	280	0.63
SME35UU	35	37	40	80	80	63	18	16	50°	55	55	M8	18	170	320	0.92
SME40UU	40	42	45	90	90	72	20	19	50°	65	65	M10	20	220	410	1.33
SME50UU	50	53	60	120	110	92	25	23	50°	94	80	M10	20	390	810	3

Support Unit BF

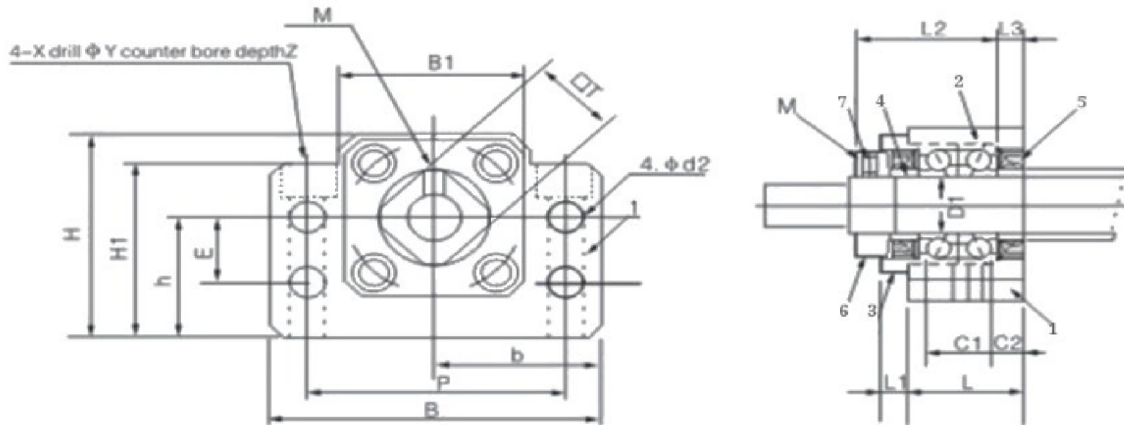


MODEL	SHAFT DIAMETER	L	B	H	b	h	B1	H1	E	P	d2	X	Y	Z	BEARING	SNAP RING
					+/- 0.02	+/- 0.02										
BF-12	10	20	60	43	30	25	35	32.5	18	46	5.5	6.6	11	1.5	6000ZZ	S10
BF-15	15	20	70	48	35	28	40	38	18	54	5.5	6.6	11	6.5	6002ZZ	S15
BF-17	17	23	86	64	43	39	50	55	28	68	6.6	9	14	8.5	6203Z	S17
BF-20	20	26	88	60	44	34	52	50	22	70	6.6	9	14	8.5	6004ZZ	S20

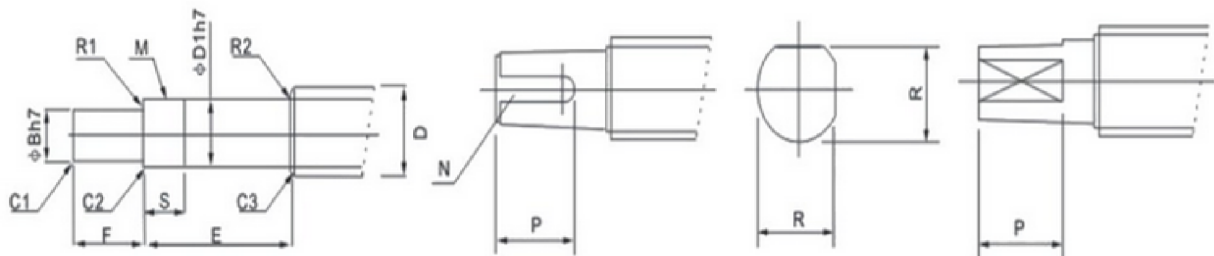


MODEL	BALL SCREW OUTER DIAMETER D	D1	E	LOCATING SNAP RING		
				A	B	C
BF-12	phi 14, phi 15, phi 16	10	11	9.6	1.15	9.15
BF-15	phi 18, phi 20	15	13	14.3	1.15	10.15
BF-17	phi 20, phi 25	17	16	16.2	1.15	13.15
BF-20	phi 25, phi 28	20	16	19	1.35	13.35

Support Unit BK

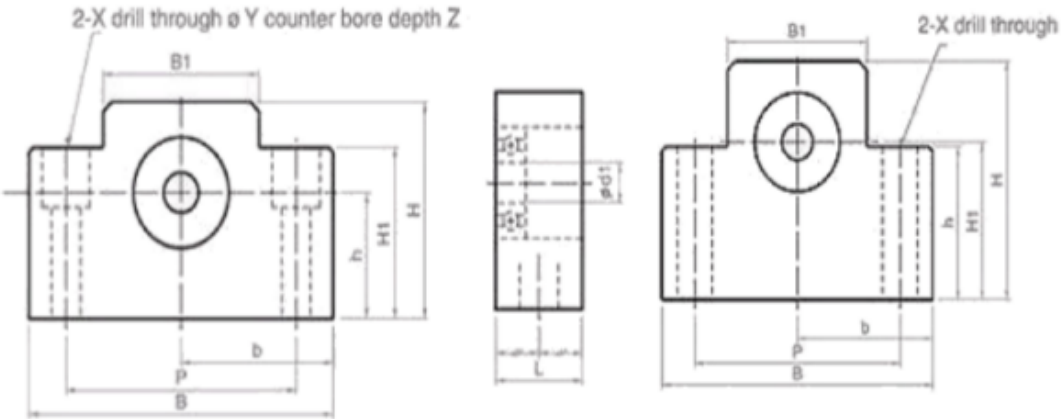


MODEL	SHAFT DIAMETER	L	L1	L2	L3	B	H	b		B1	H1	E	P	C1	C2	d2	X	Y	Z	M	T
								+/- 0.02	+/- 0.02												
Bk12	12	25	6	29	5	60	43	30	25	35	32.5	18	46	13	6	5.5	6.6	11	1.5	M3	19
Bk15	15	27	6	32	6	70	48	35	28	40	38	18	54	15	6	5.5	6.6	11	6.5	M3	22
Bk17	17	35	9	44	7	86	64	43	39	50	55	28	68	19	8	6.6	9	14	8.5	M4	24
Bk20	20	35	8	43	8	88	60	44	34	52	50	22	70	19	8	6.6	9	14	8.5	M4	30



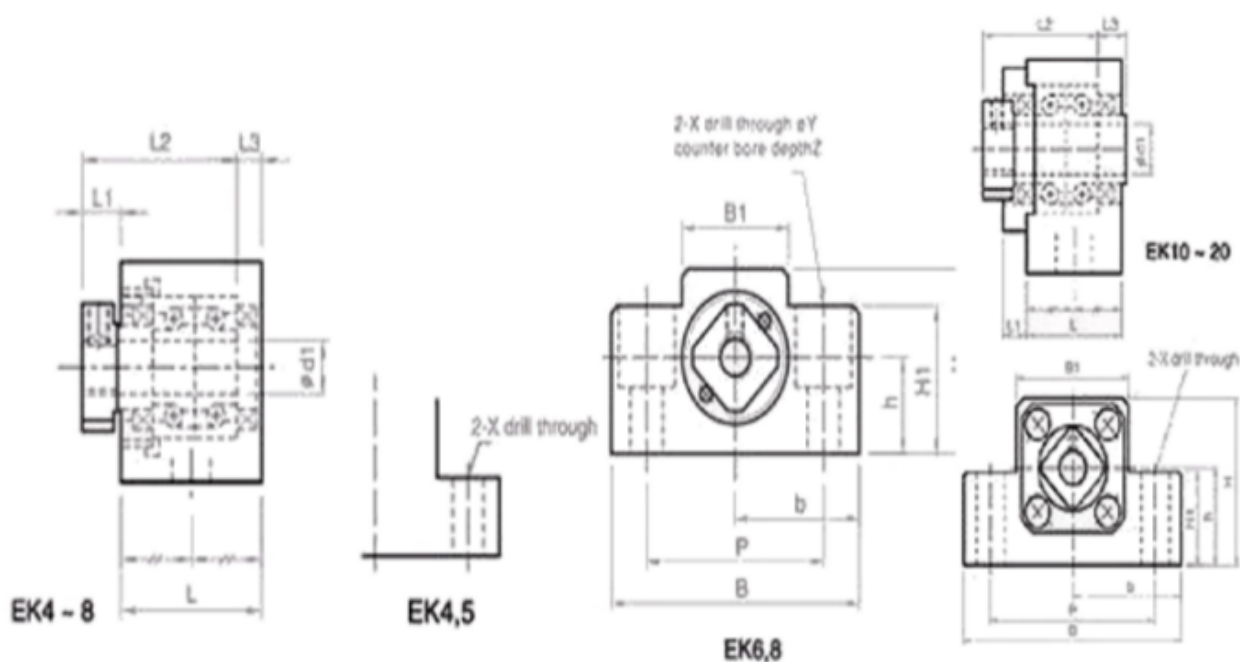
MODEL	BALL SCREW OUTER DIAMETER D	D1	B	E	F	M	S	PHASE			RADIUS		KEY WAY DIMENSION		H2	
								C1	C2	C3	R1	R2MAX	N	P	R	P
Bk12	φ14, φ15, φ16, φ18	12	10	39	15	M12 x 1	14	0.5	0.5	0.5	0.3	0.6	3 x 1.8	12	9.5	12
Bk15	φ18, φ20	15	12	40	20	M15 x 1	12	0.5	0.5	0.5	0.3	0.6	4 x 2.5	16	11.3	16
Bk17	φ20, φ25	17	15	53	23	M17 x 1	17	0.5	0.5	0.5	0.3	0.6	5 x 3	21	14.3	21
Bk20	φ25, φ28	20	16	53	25	M20 x 1	15	0.5	0.5	0.5	0.3	0.6	5 x 3	21	16	21

Support Unit EF



MODEL	d1	L	B	H	d	h	B1	H1	P	X	Y	Z
EF6	6	12	42	25	21	13	18	20	30	5.5	9.5	11
EF8	6	14	52	32	26	17	25	26	38	6.6	11	12
EF10	8	20	70	43	35	25	36	24	52	9		
EF12	10	20	70	43	35	25	36	24	52	9		
EF15	15	20	80	49	40	30	41	25	60	9		
EF20	20	26	95	58	47.5	30	56	25	75	11		

Support Unit EK

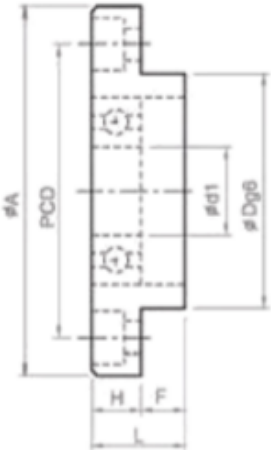
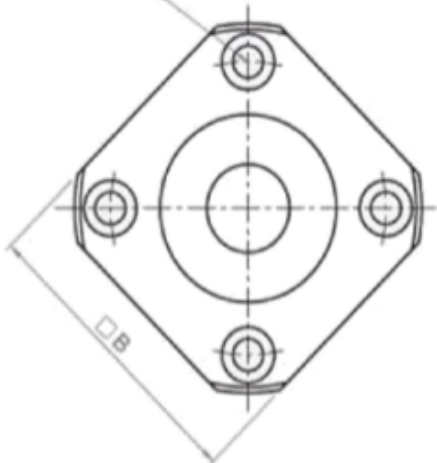


MODEL	d1	L	L1	L2	L3	B	H	d	h	B1	H1	P	X	Y	Z
EK5	5	16.5	5.5	18.5	3.5	36	21	18	11	20	8	28	4.5		
EK6	6	20	5.5	22	3.5	42	25	21	13	18	20	30	5.5	9.5	11
EK8	8	23	7	26	4	52	32	26	17	25	26	38	6.6	11	12
EK10	10	24	6	29.5	6	70	43	35	25	36	24	52	9		
EK12	12	24	6	29.5	6	70	43	35	25	36	24	52	9		
EK15	15	25	6	35	5	80	49	40	30	41	25	60	11		
EK20	20	42	10	50	10	95	58	47.5	30	56	25	75	11		

Support Unit FF

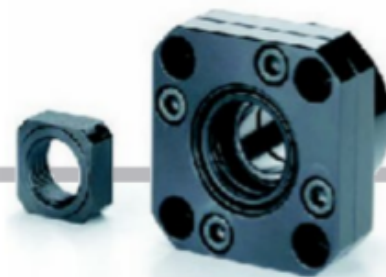


4-X drill through øY counter bore depthZ

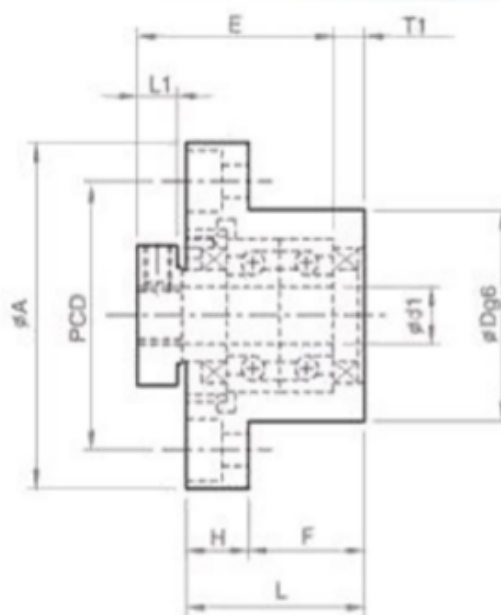
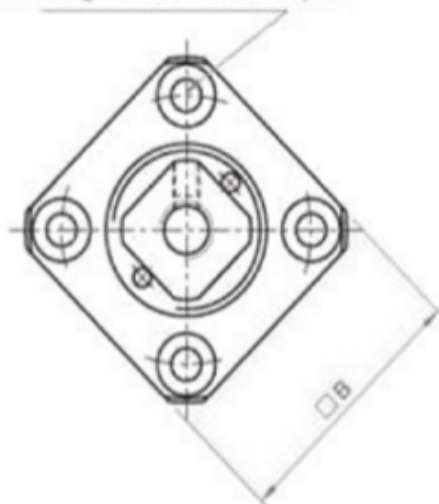


MODEL	d1	L	H	F	dg6	A	PCD	B	X	Y	Z
FF6	6	10	6	4	22	36	28	28	3.4	6.5	4
FF10	8	12	7	5	28	43	35	35	3.4	6.5	4
FF12	10	15	7	8	34	52	42	42	4.5	8	4
FF15	15	17	9	8	40	63	50	52	5.5	9.5	5.5
FF20	20	20	11	9	57	85	70	68	6.6	11	6.5
FF25	25	24	14	10	63	98	80	79	9	14	8.5
FF30	30	27	18	9	75	117	95	93	11	17.5	11

Support Unit FK



4-X drill through øY counter bore depthZ



MODEL	d1	L	H	F	E	dg6	A	PCD	B	L1	T1	X	Y	Z
FK5	5	16.5	6	10.5	18.5	20	34	26	26	5.5	3.5	3.4	6.5	4
FK6	6	20	7	13	22	22	36	28	28	5.5	3.5	3.4	6.5	4
FK8	8	23	9	14	26	28	43	35	35	7	4	3.4	6.5	4
FK10	10	27	10	17	20.5	34	52	42	42	7.5	5	4.5	8	4
FK12	12	27	10	17	29.5	34	52	42	42	7.5	5	4.5	8	4
FK15	15	32	15	17	36	40	63	50	52	10	6	5.5	9.5	6
FK20	20	52	22	30	50	57	85	70	68	8	10	6.6	11	10
FK25	25	57	27	30	60	63	98	80	79	13	10	9	15	13
FK30	30	62	30	32	61	75	117	95	93	11	12	1	17.5	15